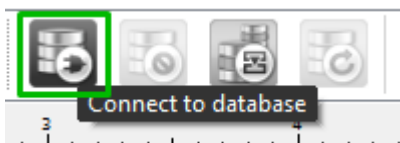


TECHNOTE [18/2015]

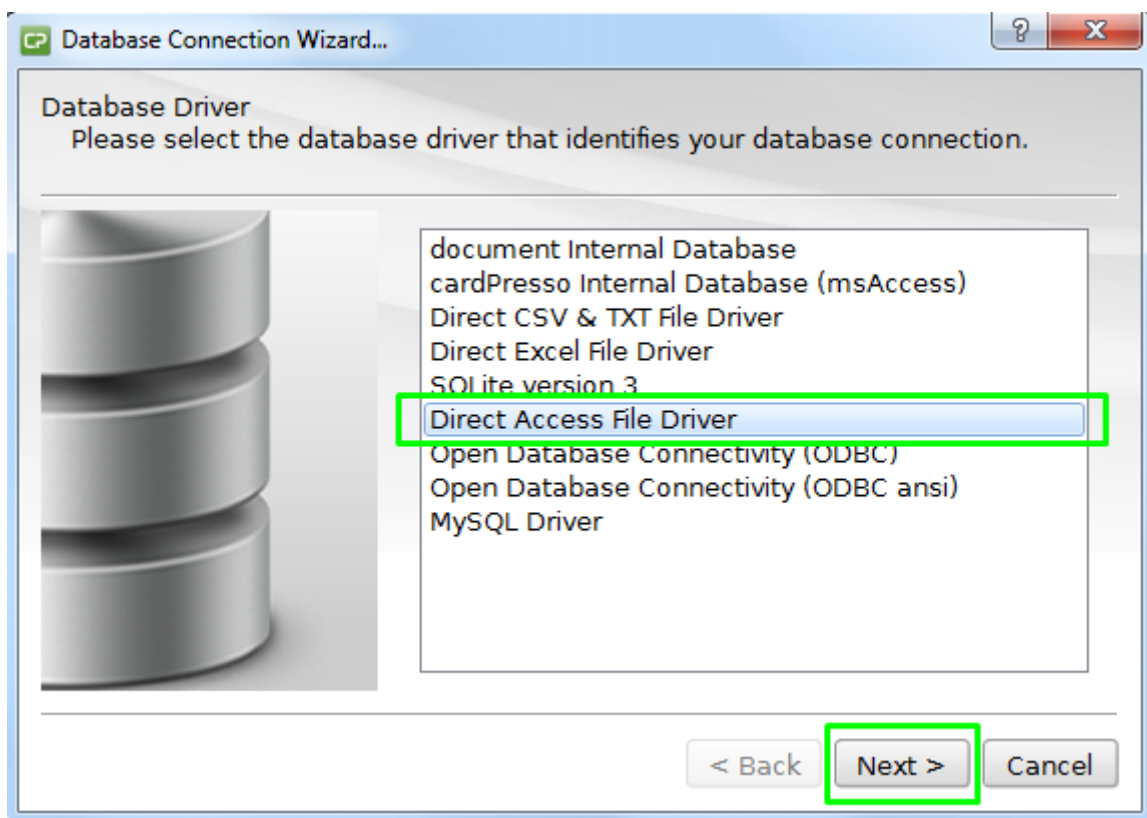
DATE: Mar, 2015
AUTHOR: cardPresso TECHNICAL SUPPORT
PRODUCT/AREA: Database

How to connect to an Access DB

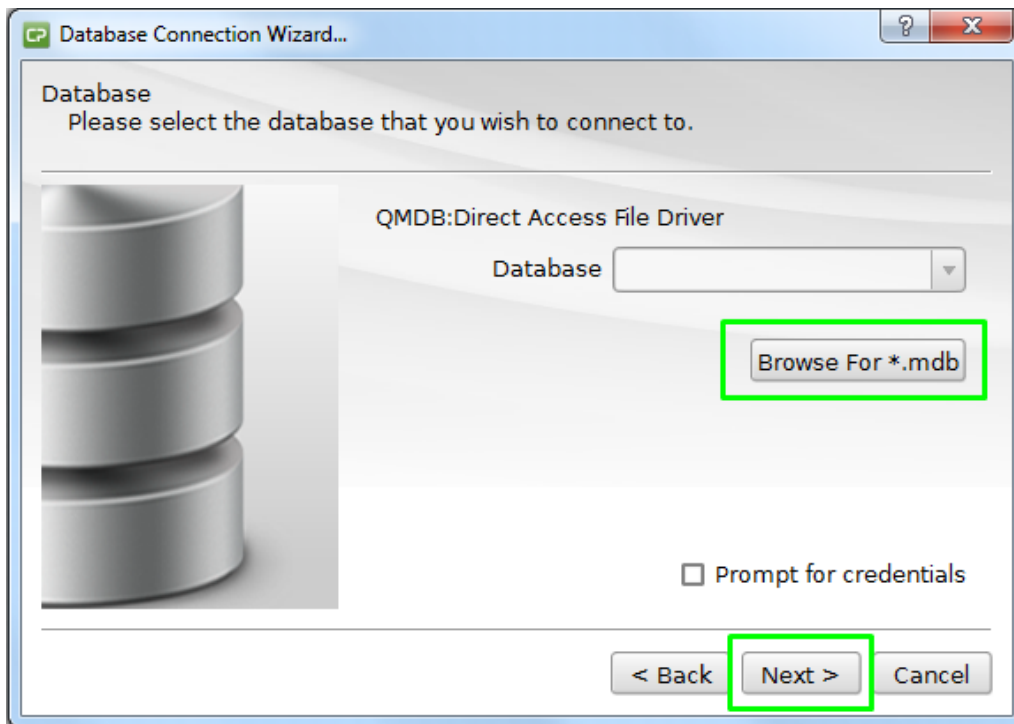
To connect to an access database click in **Connect to database** button.



Select the **Direct Access File Driver** option.

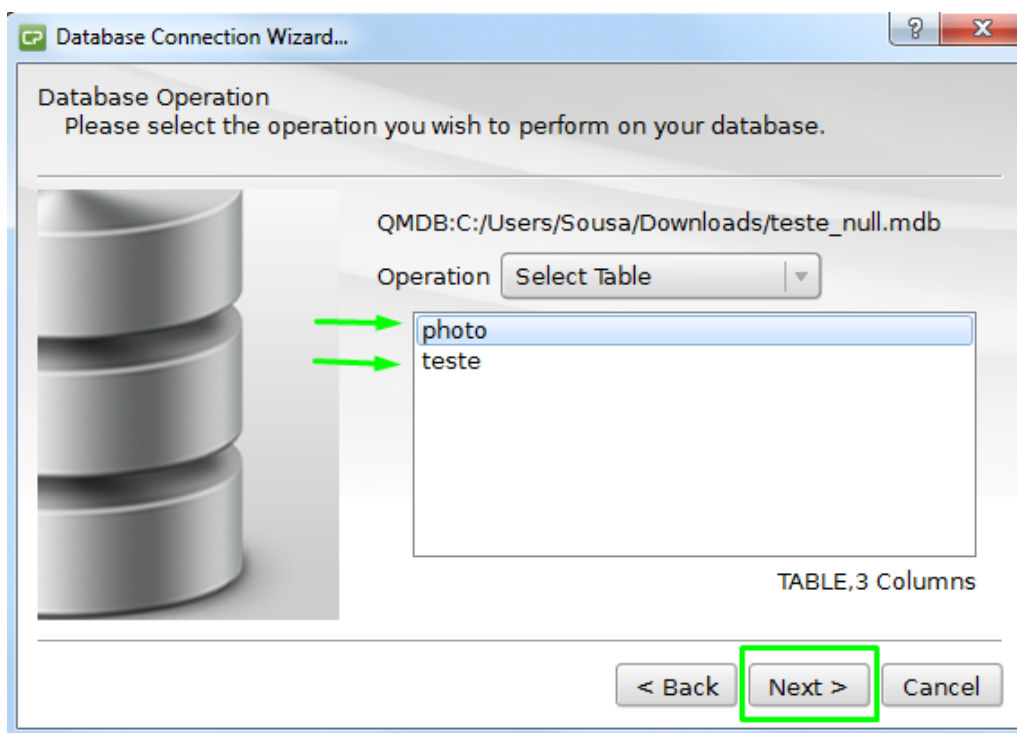


Browse the database file and click **Next**.



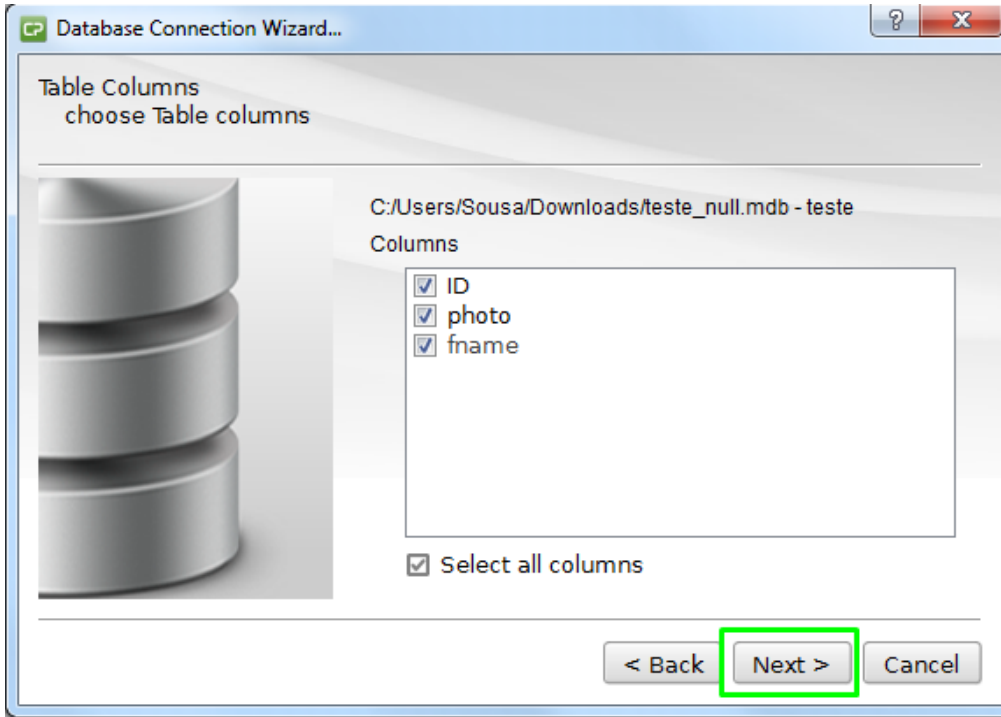
Please note that Access database must be in *.mdb format.

After the selection there will be displayed all the tables that are included in the database. Please choose the one that it's desired to be worked.

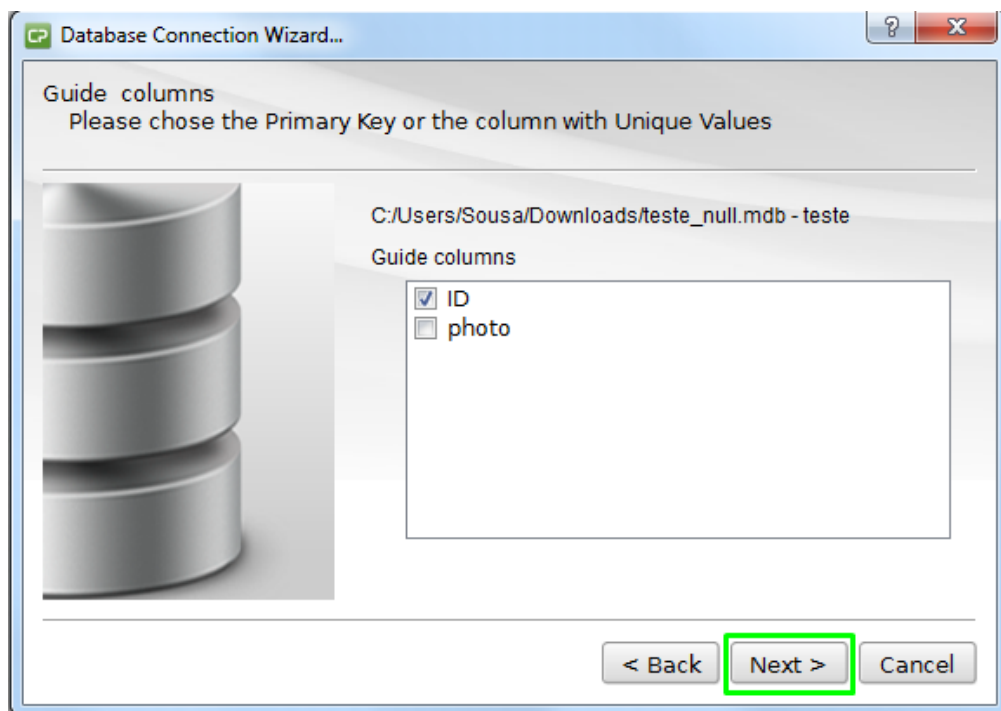


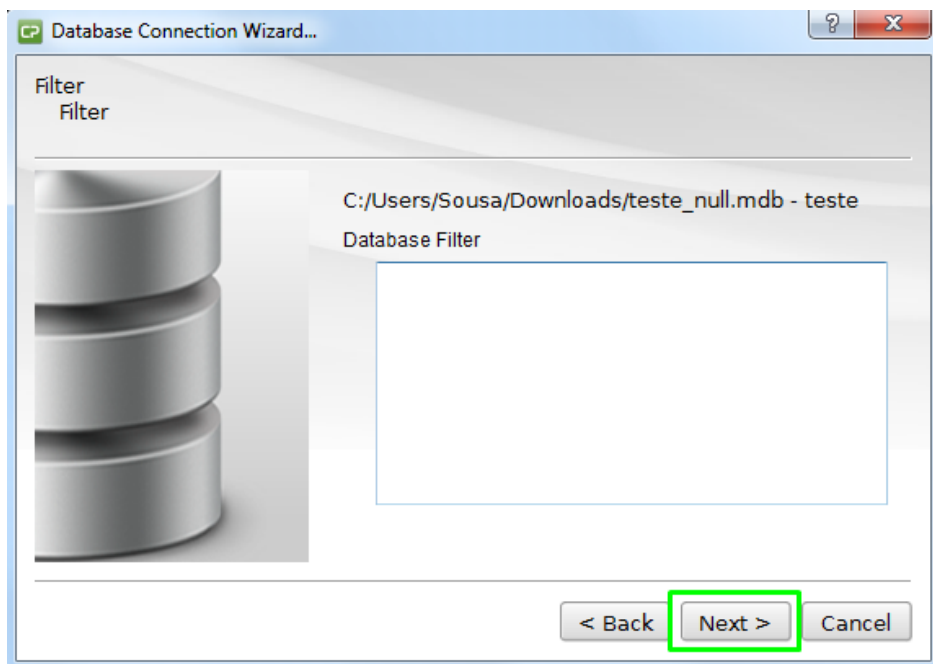
In the example above we have two tables, which in this example we will work with the “teste” table.

After clicking **Next** information about the columns will be displayed. No changes are required.

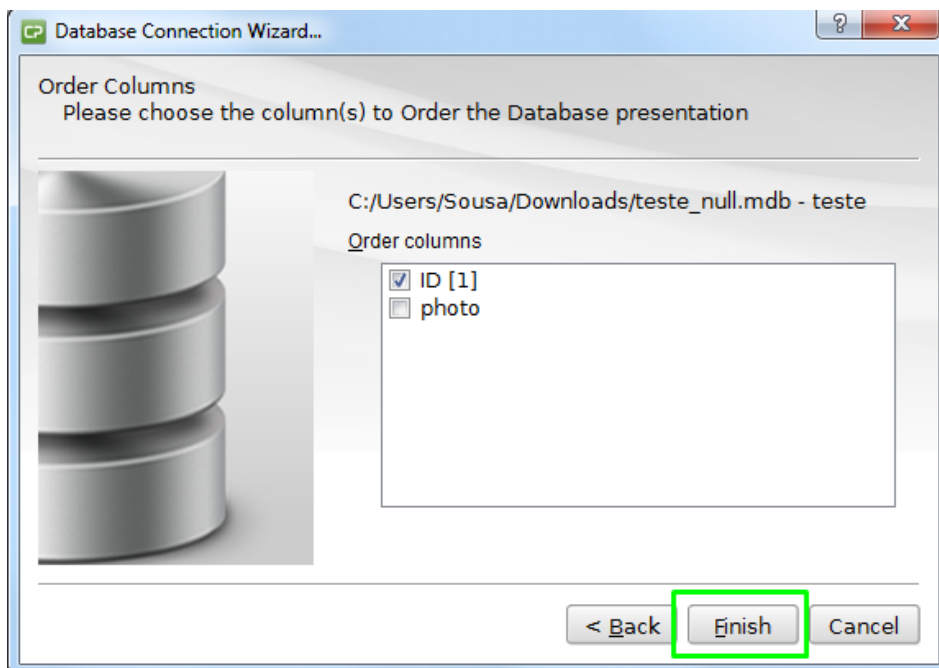


Information about the database will still appear. Press **Next** in every window displayed.

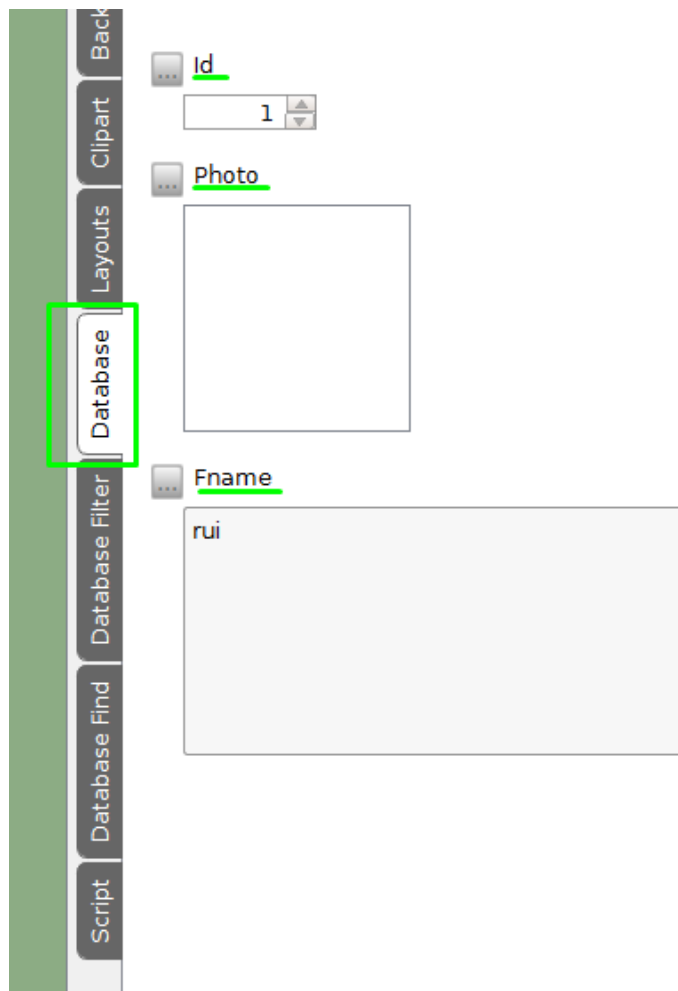




The last window will appear. Press **Finish** and cardPresso will be connected to the pretended database.



A new feature will appear in the right side of cardPresso interface (**Database**) which allows the user to drag and drop any information from the database.



As the column **Database** appears it means that the connection to the database was successful.