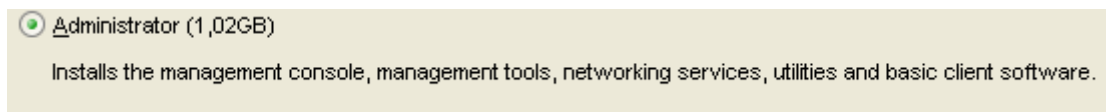


**TECHNOTE**  
**[ 58/2014 ]**

**DATE:** Dec, 2014  
**AUTHOR:** cardPresso TECHNICAL SUPPORT  
**PRODUCT/AREA:** Database

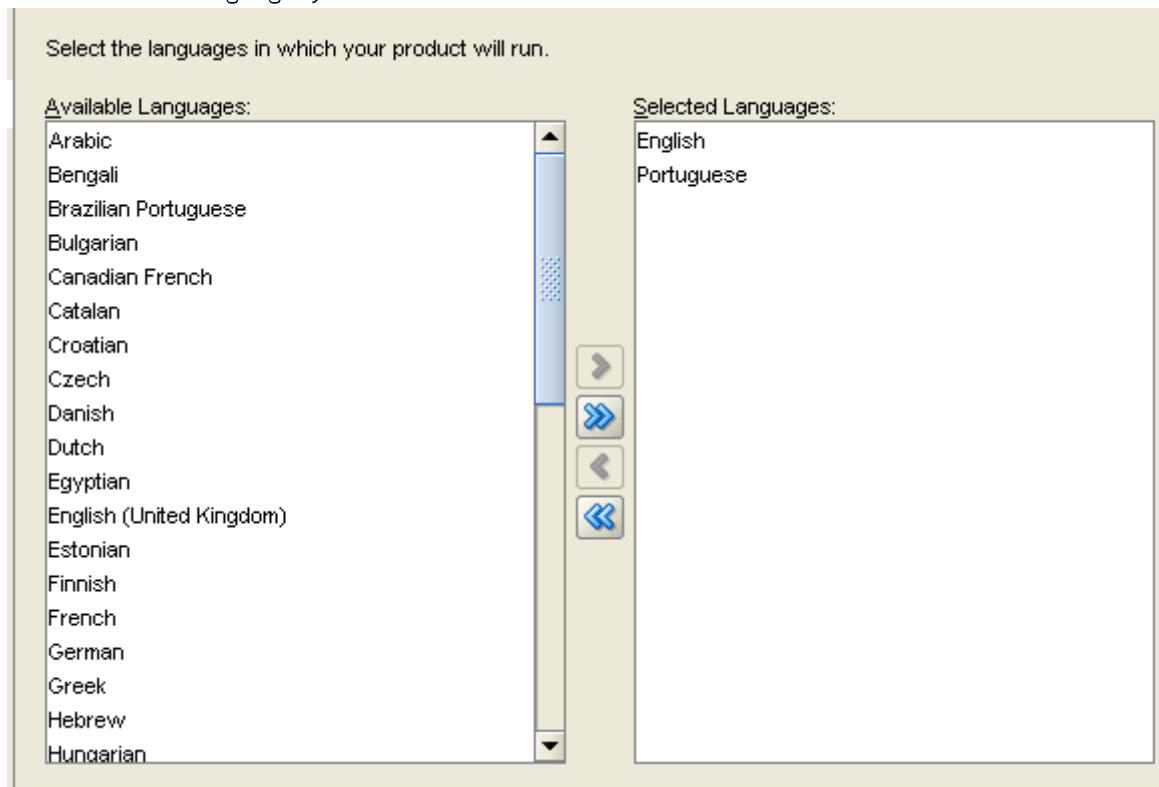
**Subject:** Oracle Database Connection

1. Check the **HOST**, **PROTOCOL** and **PORT**.
2. After you have the information you will need to create the Listener. Install **client**, be sure on the installation you have checked the option



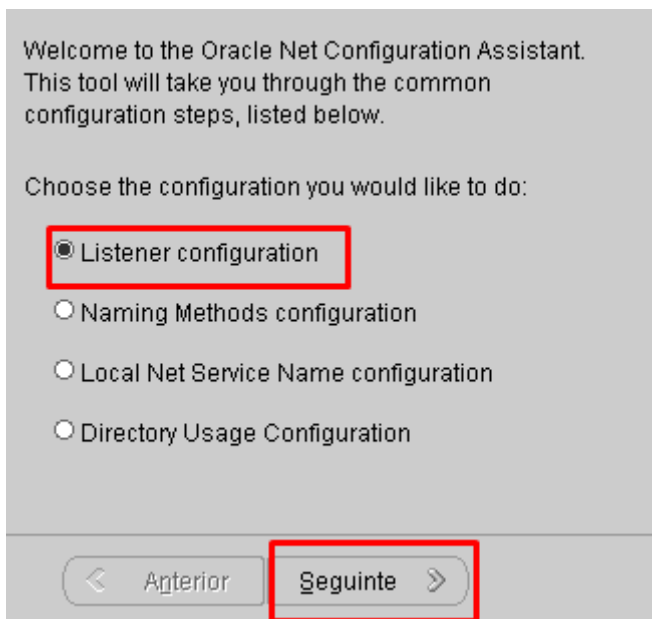
And click **Next:**

Now choose the languages you want in the database.

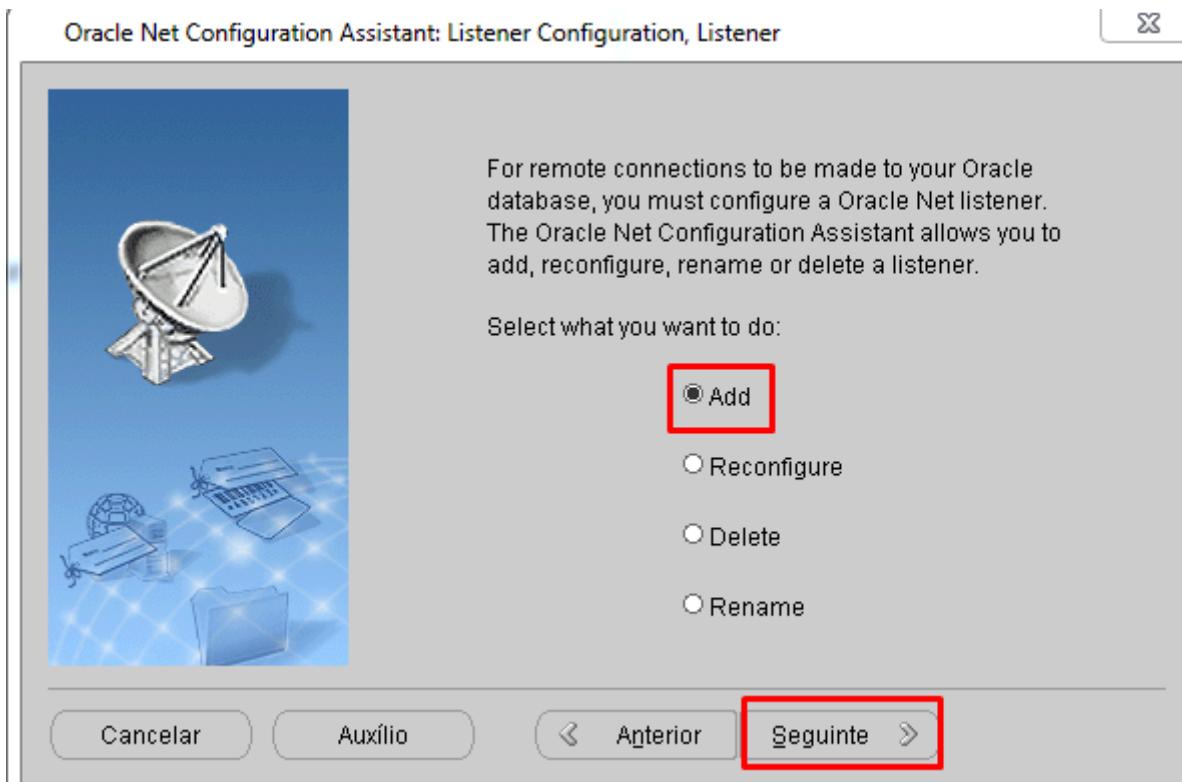


3. Next go to **START>ALL PROGRAMS>ORACLE - ORACLIENtxxx\_HOME1>CONFIGURATION AND MIGRATION TOOLS>NET CONFIGURATION ASSISTANT**.

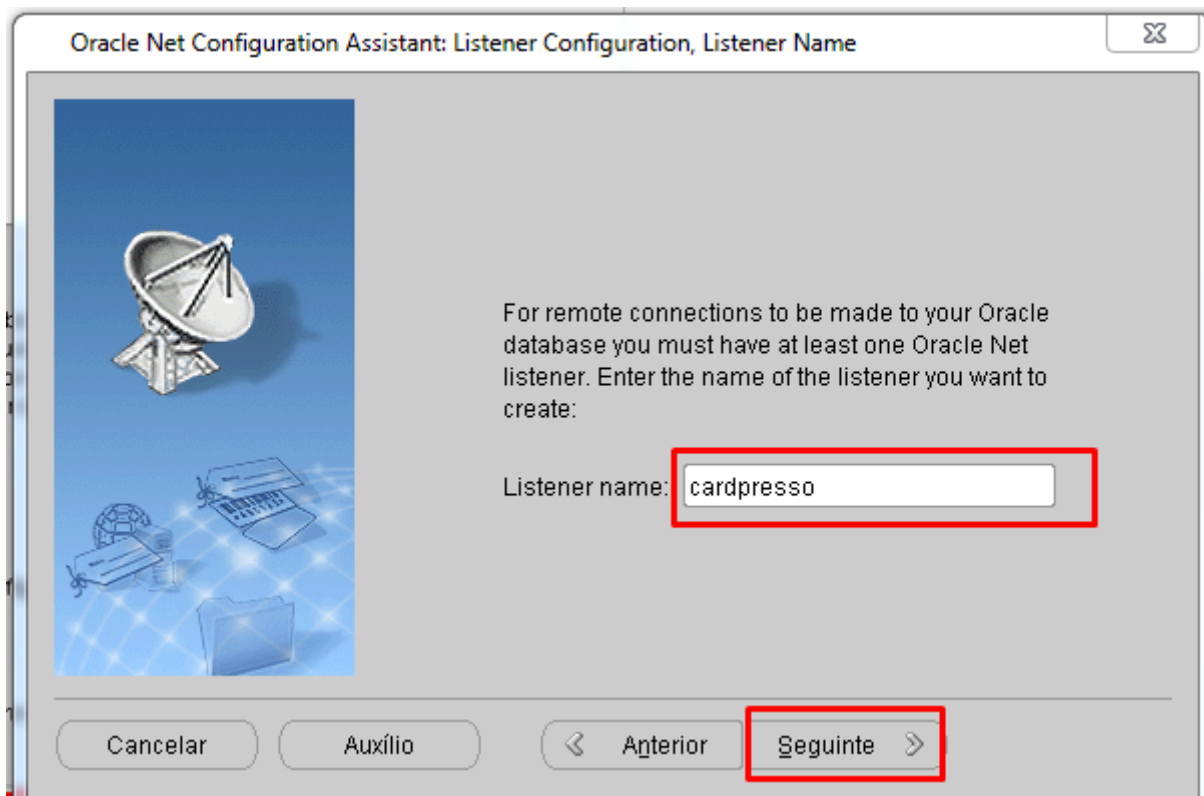
Choose **LISTENER CONFIGURATION** and click **NEXT**.



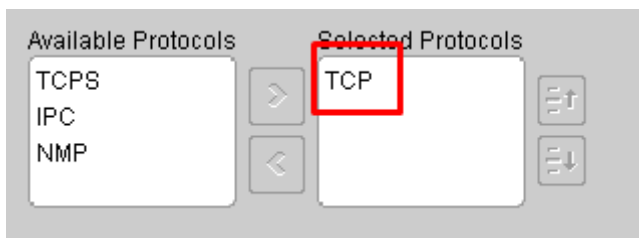
Select **ADD** and click **NEXT**.



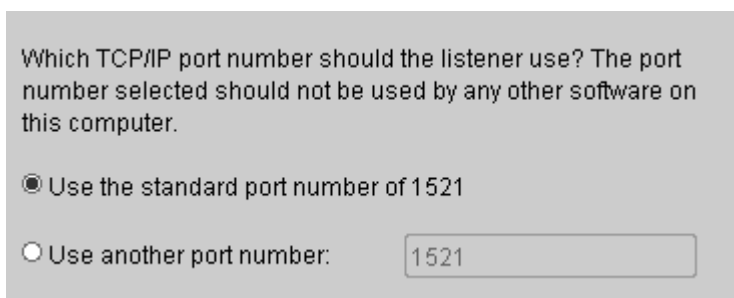
Now choose your **LISTENER's** name (Ex: **cardpresso**), and click **NEXT**.



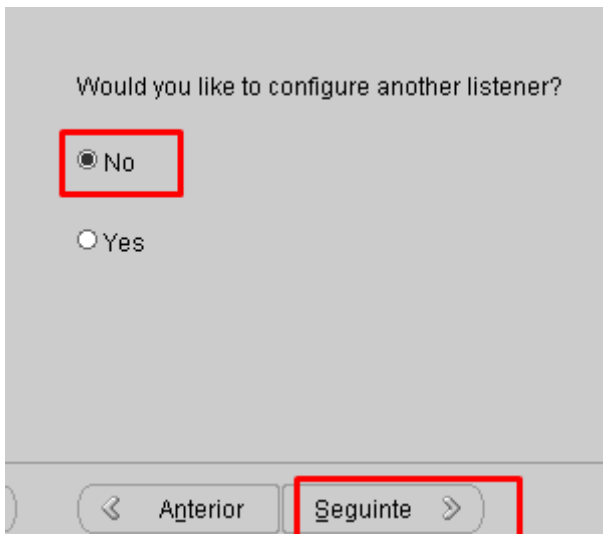
Choose the **protocol** you had seen in **LISTENER** (Ex: TCP).



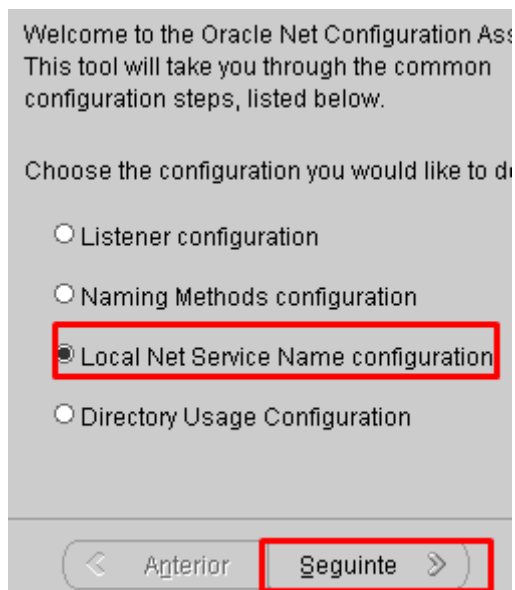
Use the **port** you had seen in **LISTENER**(Ex: 1521).



Now choose **No** and click **NEXT**.



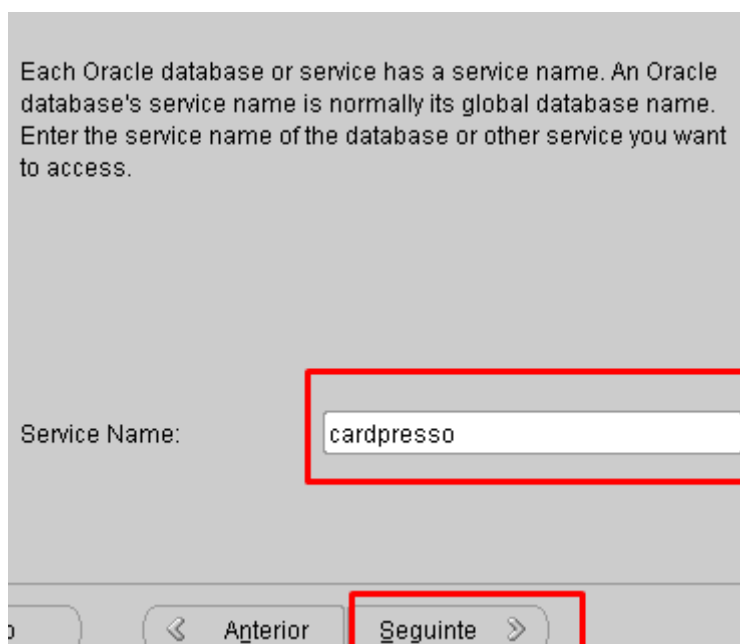
4. Choose **LOCAL NET SERVICE NAME CONFIGURATION** and click **NEXT**.



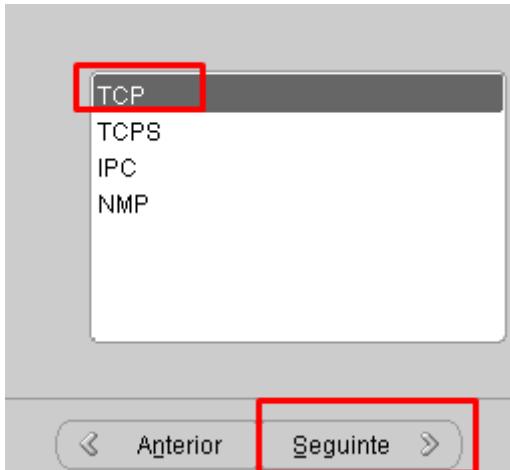
5. Select **ADD** and click **NEXT**.



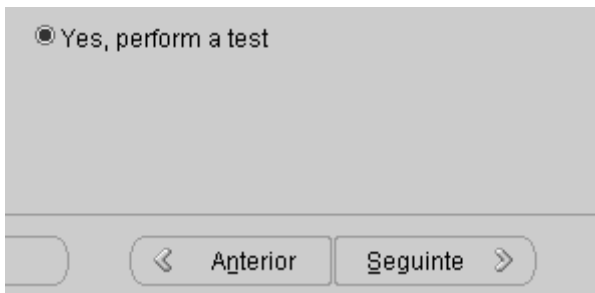
6. Choose the **DATABASE NAME** (Ex: **cardpresso**).



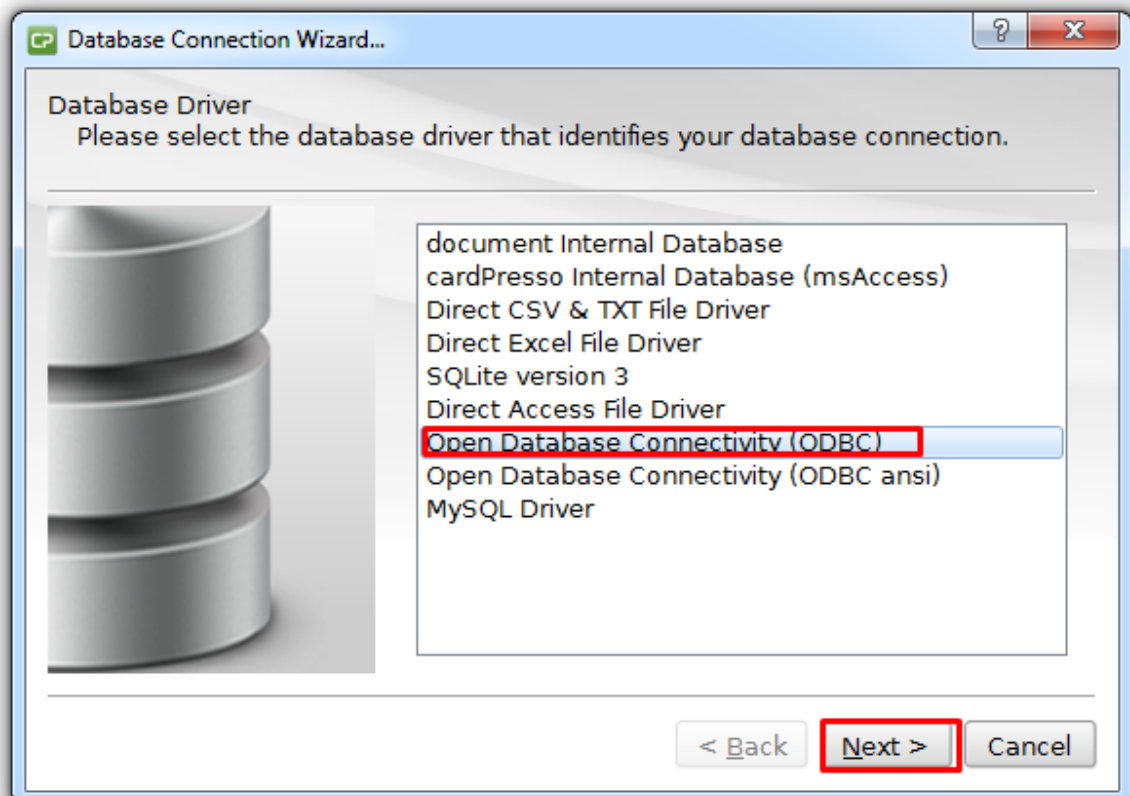
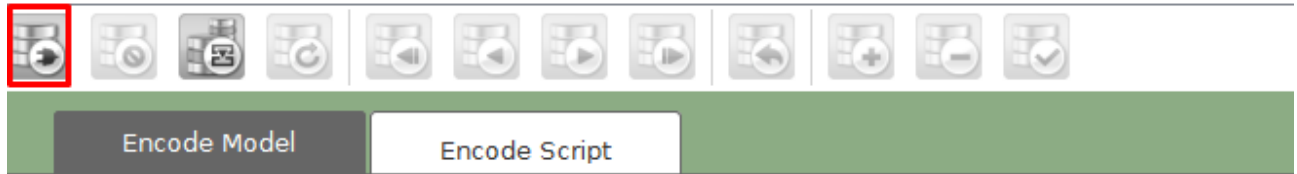
7. Choose the **protocol** they will communicate (**TCP**).



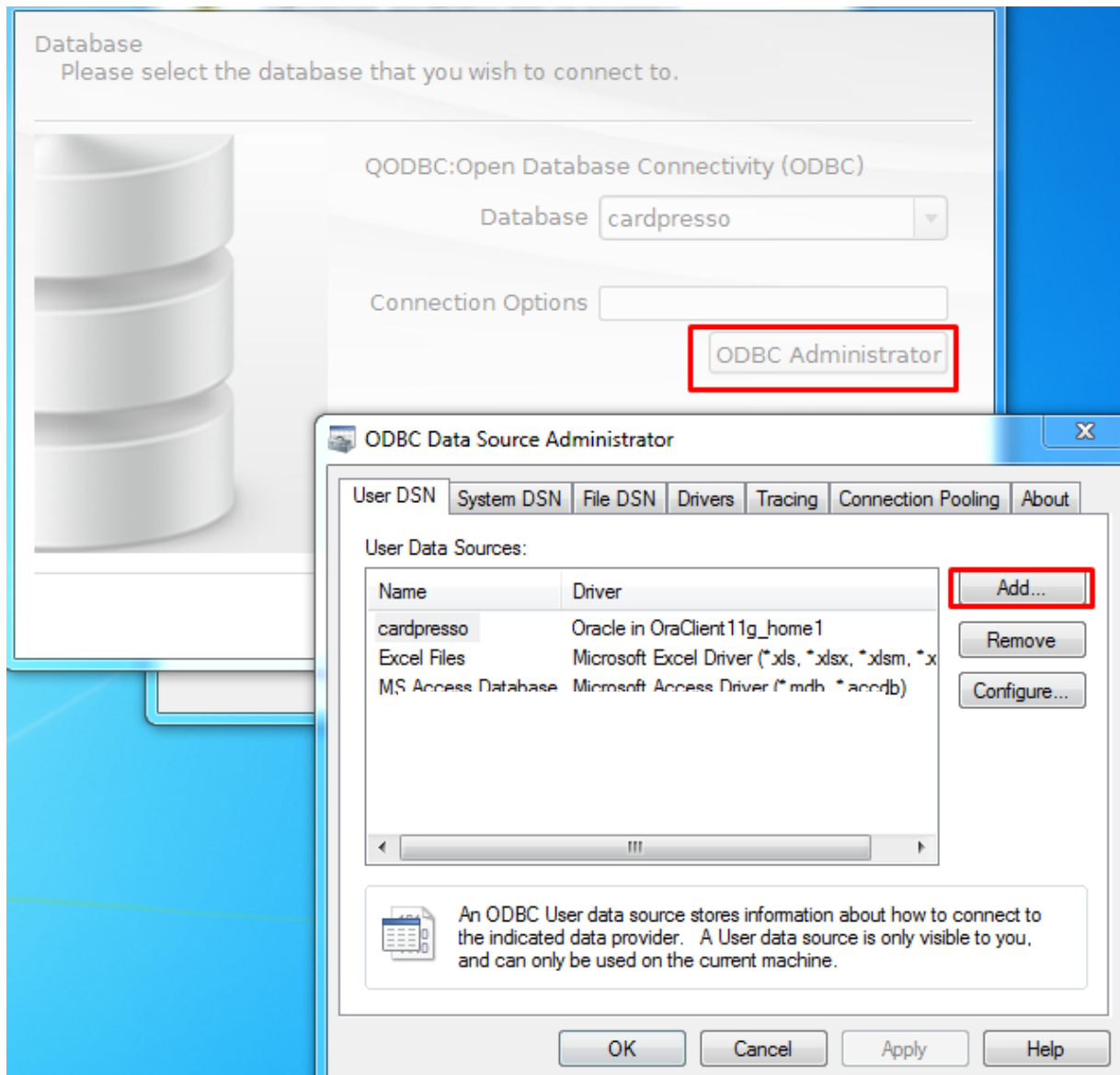
8. Insert the hostname, confirm the **port(1521 (Oracle default))** and click next.
9. Choose **Yes, perform a test**, and click next, you must know the user and password of the **DATABASE**.



10. Now go to **cardPresso** and click **connect to database**, it will open the **wizard**, choose **Open Database Connectivity (ODBC)**, and click **NEXT**.

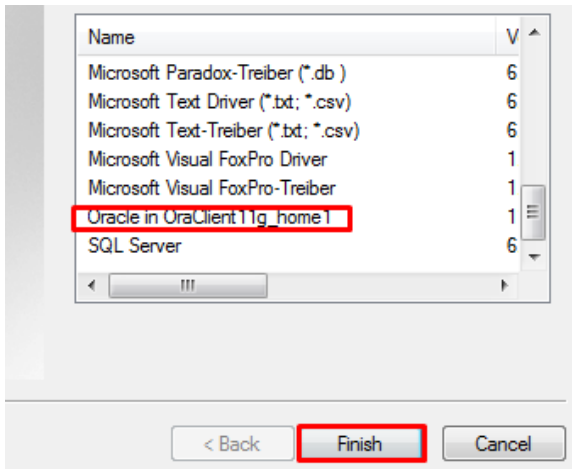


11. Now click **ODBC ADMINISTRATOR** and click **ADD**.

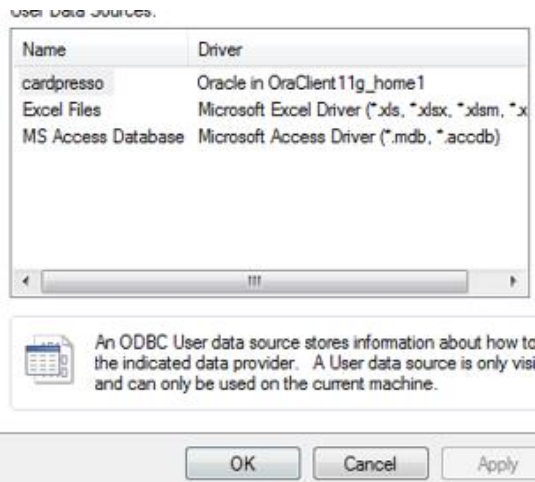


12. Choose **ORACLE** in **ORACLECLIENT11g\_HOME1** and click finish.





13. Make sure that the previously configured connection appears, like this and click **OK**.



14. When you click **OK**, **cardpresso** should appear in field **Database**, when you click **NEXT**, the **DATABASE LOGIN** will appear, use your user and pass, check  **Prompt for credentials** and you are connected.

