

## TECHNOTE [11/2014]

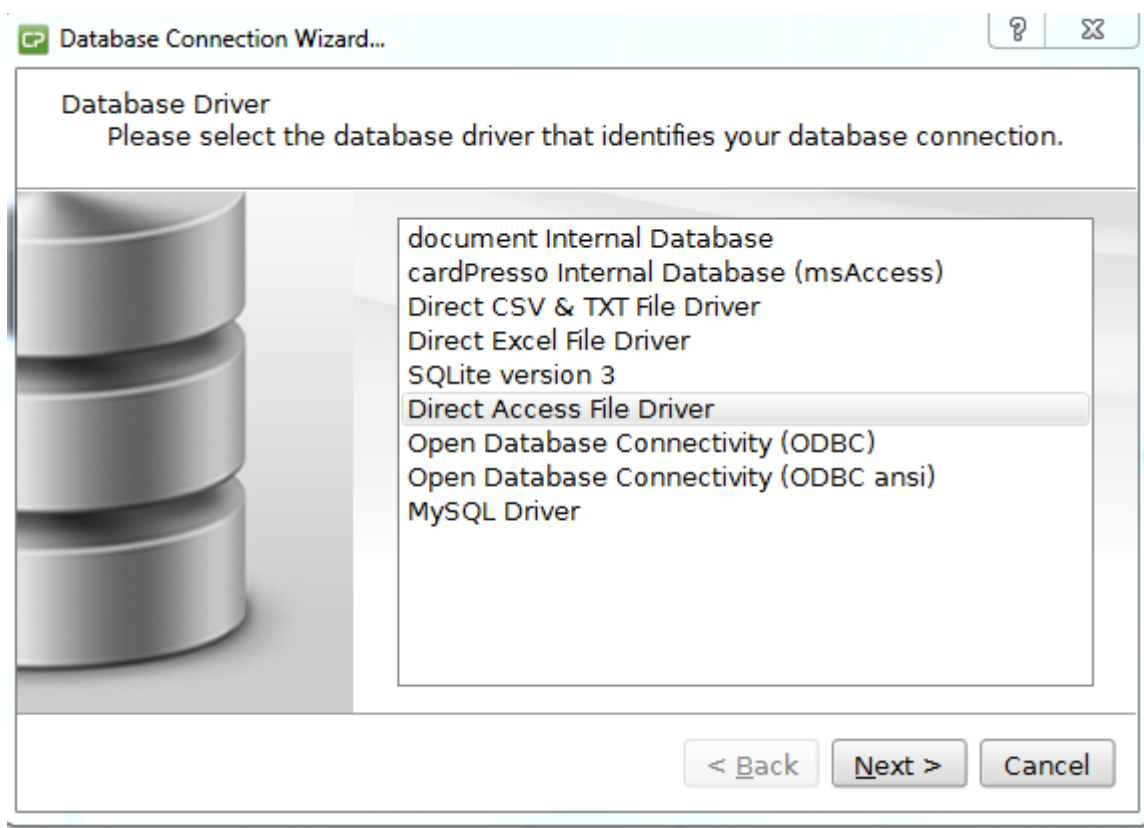
**DATE:** January, 2014  
**AUTHOR:** cardPresso TECHNICAL SUPPORT  
**PRODUCT/AREA:** Database

## Using Multiple Database Tables

For the execution of this technote, please download [here](#) a test .card file and its associated database in .zip format.

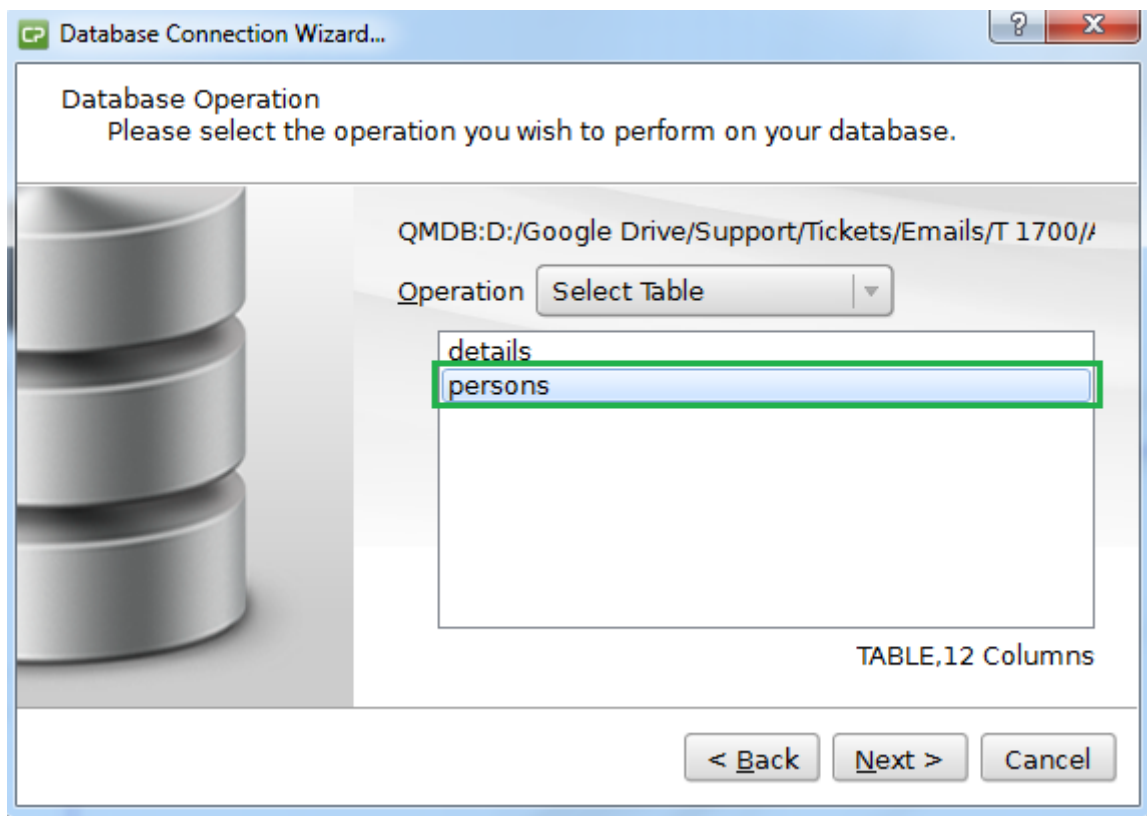
To use multiple database tables in the same cardPresso document, please follow these steps:

Open the BusinessCard-SQLDetails.card file and then connect to the database using the Direct Access File Driver in cardPresso's **Database Connection Wizard**.





Select the **persons** table before completing the wizard.



Select the card's item that is blue highlighted in the image below.

In the **Script** tab on the right side of the screen there is a query that will collect data from the other table of the database, called **details**.

The screenshot displays the CardPresso application interface. On the left, a list of items is shown under the heading 'ESSO'. The items are: 'C (programming language)', 'C+ (programming language)', 'MFC - Microsoft Foundation Class Library', 'PHP 5.2', and 'QT 4.5'. A blue dashed rectangular selection box highlights the 'PHP 5.2' item. On the right side, the 'Script' tab is active, showing a dropdown menu with 'Record changed' selected. Below the dropdown, the following SQL query is entered: `SQL="select description from details where PersonID="+currentRecord.ID;`, `QUERY=database.exec(SQL);`, and `currentitem.data=QUERYtoString();`. At the bottom of the script editor, there are 'Script' and 'Output' tabs, and a small icon.